

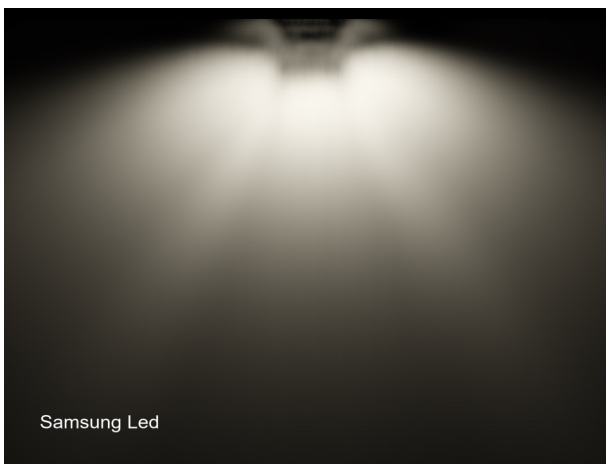
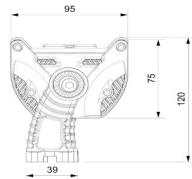
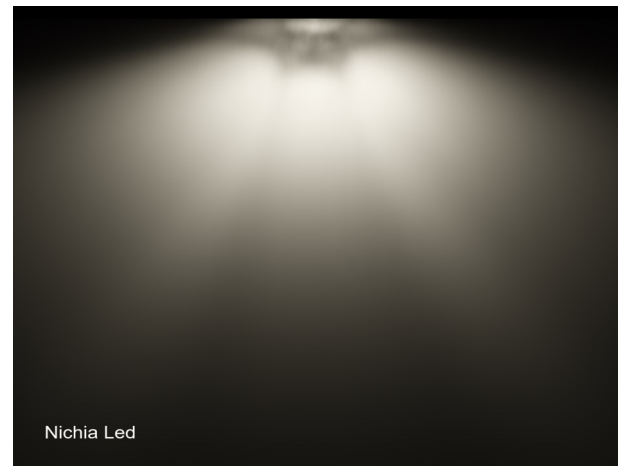
Code **36BSTS2-1 ME4a**

IP With the Silicone Gasket
Silicone Resistance (-50 +120 0C)
IP 62 To 66 With Mounting method

Street Lighting



Degree : ME4a⁰ ±3%.



USED ALUMINUM

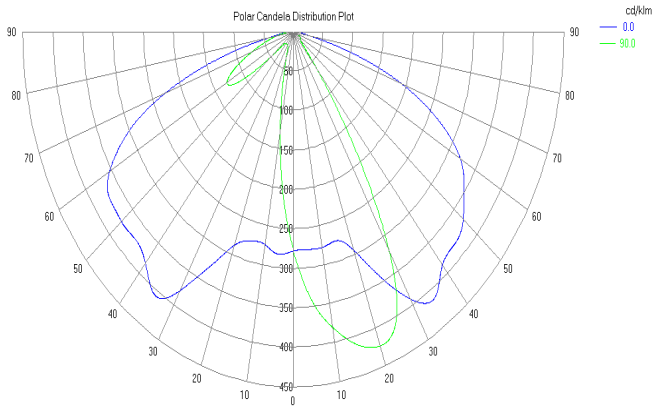
www.kavaprofil.com



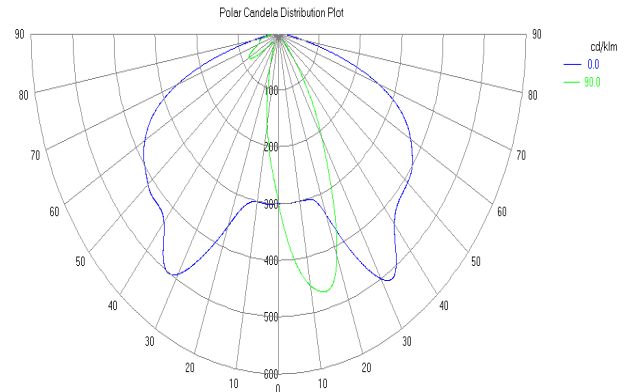


Used LED

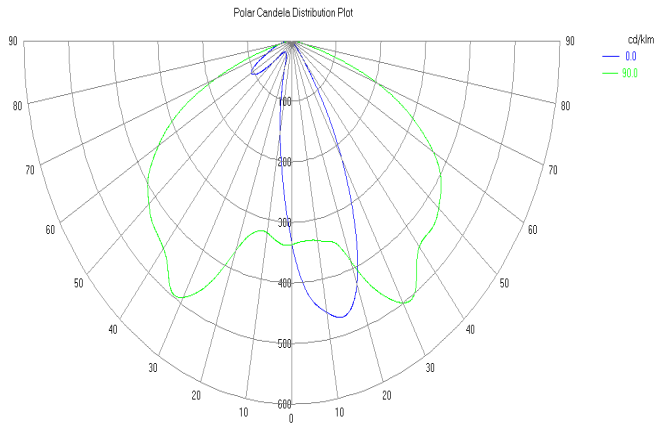
LG LEMWS36X70 Middle Power LED



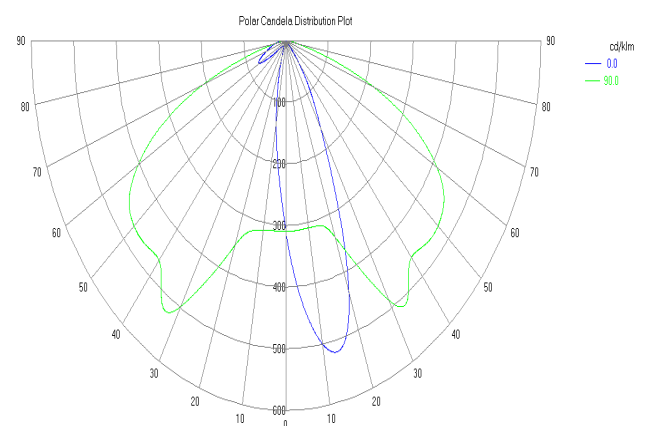
Nichia NF2W757GRT-V1 Middle Power LED



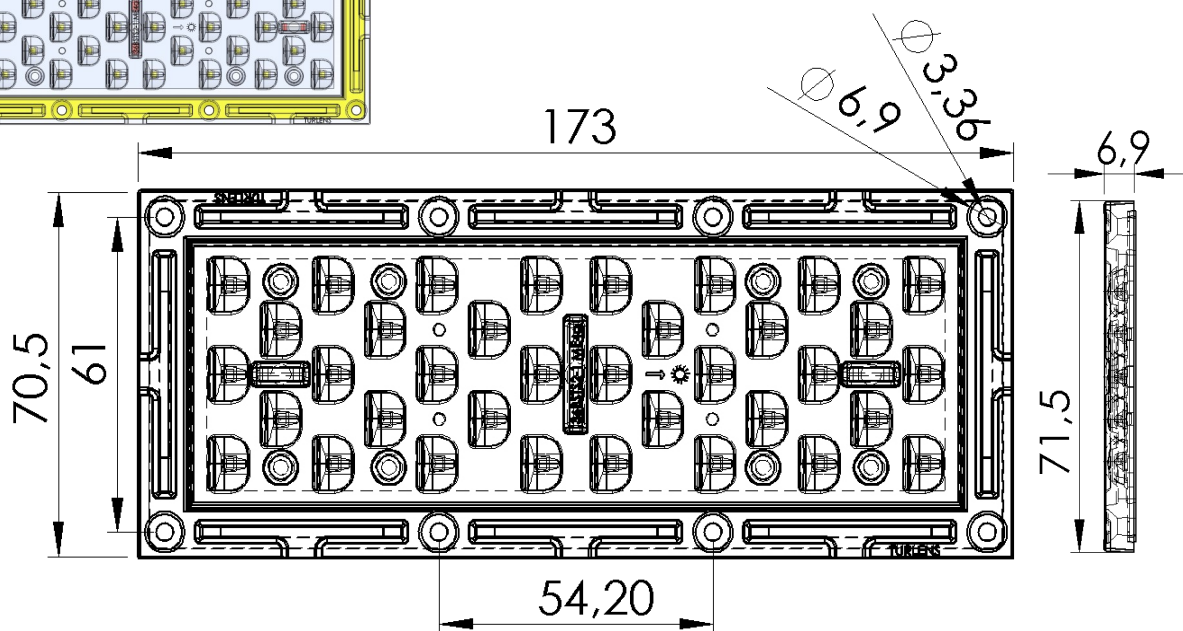
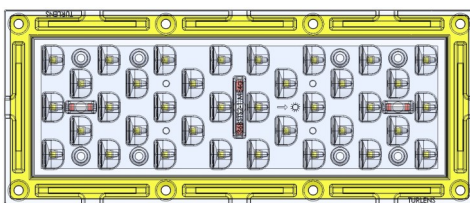
Samsung LM302C Middle Power LED



Osram GW PSLRS1.EC Middle Power LED



LENS MEASUREMENTS





DIALux

ST ME4a / Planning data Path profile

Maintenance multiplier: 0.80

Roadway (Width: 7.000 m, Number of lanes: 2, Asphalt: R3, q0: 0.070)

Skylights:

Luminous flux (luminance): 12203 lm Maximum light intensity value

at (da) 70 °: 271 cd / klm

at (da) 80 °: 23 cd / klm

at (da) 90 °: 13 cd / klm

In any case, the usable installed skylights at the angle given by the bottom vertical in all directions.

The regulation provides light intensity class requirements G3.

Regulation provides glare index class requests D.3.

Glare limitation class (DIN 5044): KB 2

Luminous flux (Lamps): 14295 lm

Skylight power: 0.0 W

Edit: one side down

Mast clearance: 22,000 m

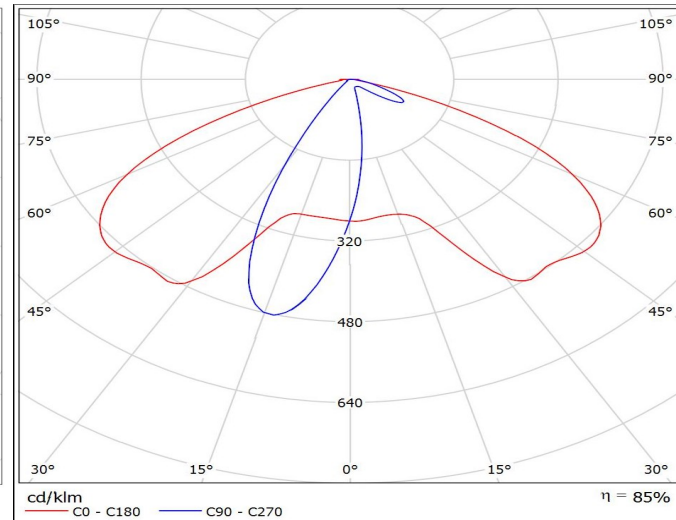
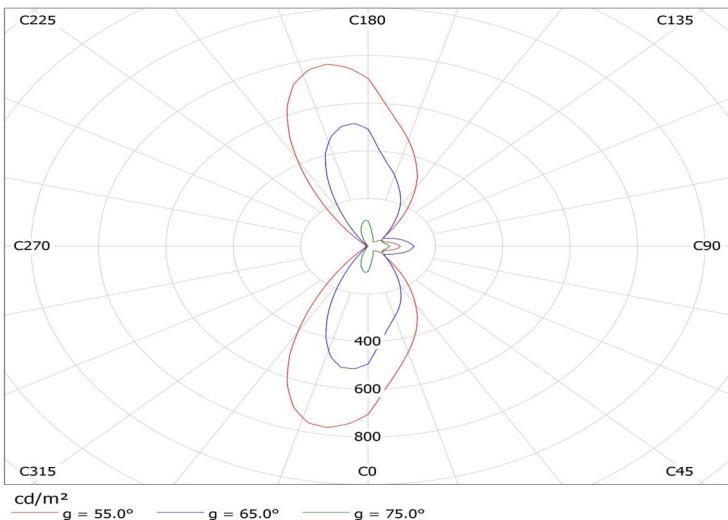
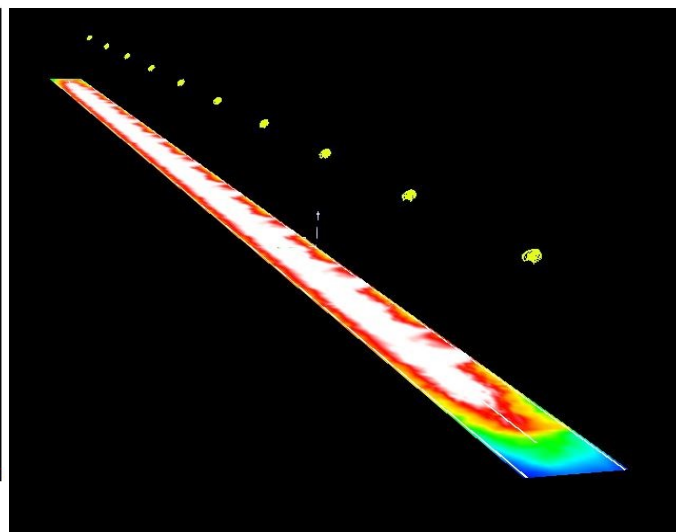
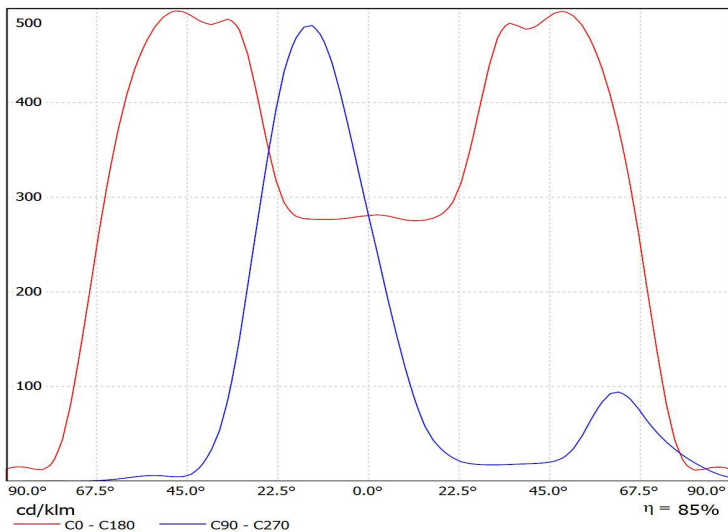
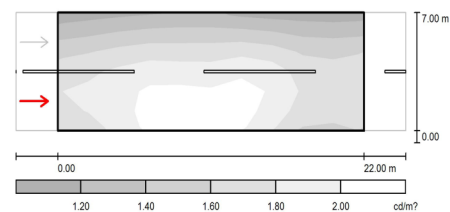
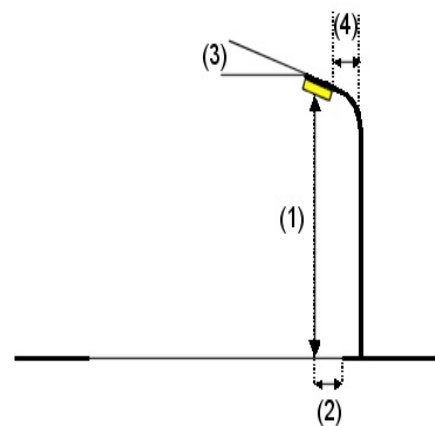
Mounting height (1): 12,000 m

Light point height: 11,902 m

Overhang (2): -0.645 m

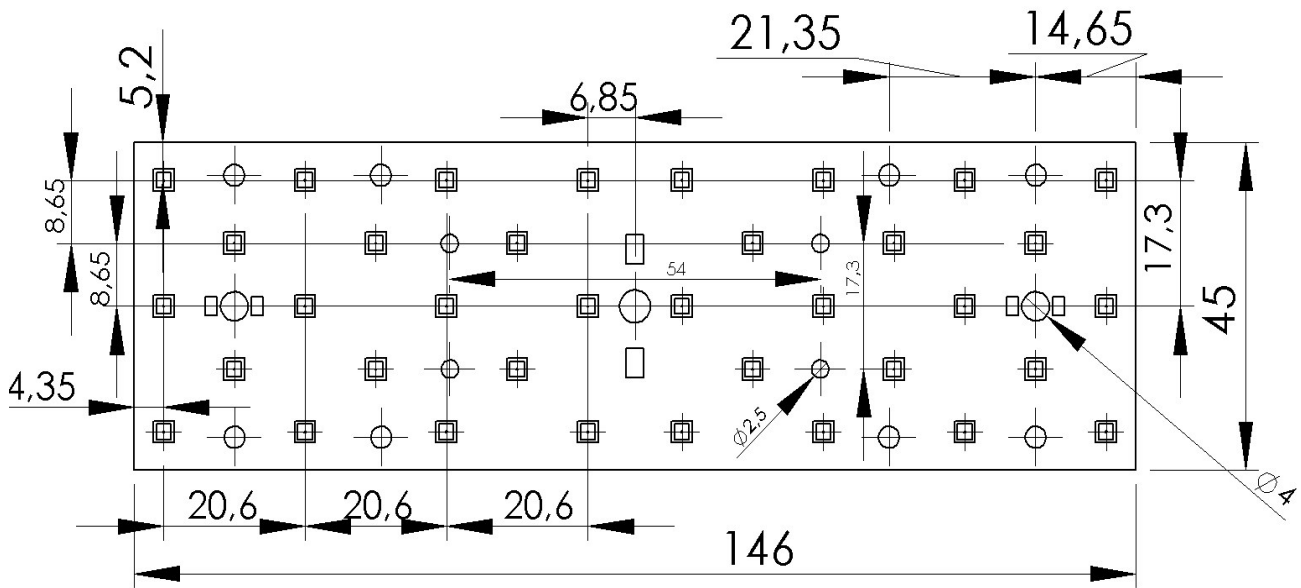
Carrier arm inclination (3): 10.0 °

Length of support arm (4): 0.300 m

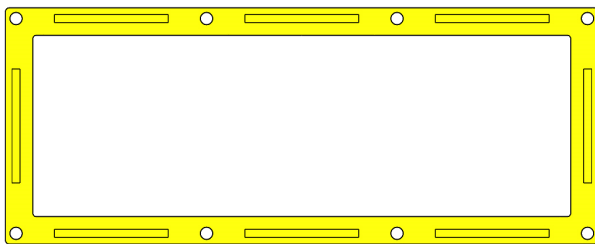




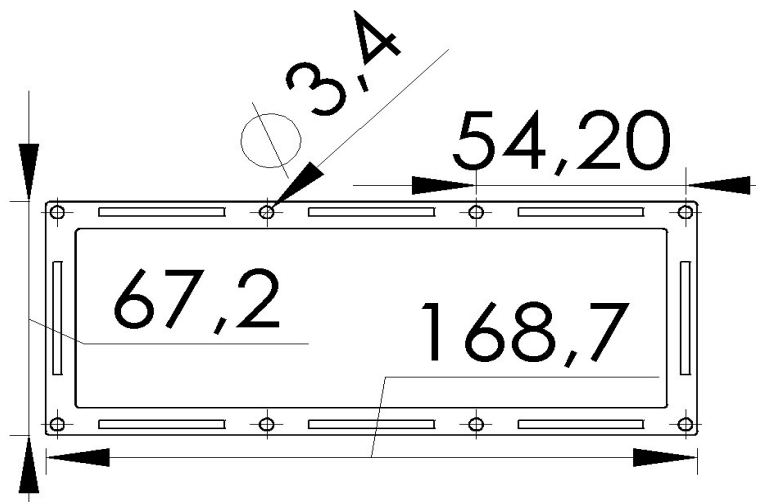
PCB MEASUREMENTS



SILICONE GASKET



IP With the Silicone Gasket
 Silicone Resistance (-50 +120 0C)
 IP 62 To 66 With Mounting method



PACKAGING INFORMATION



Box Quantity : 52 PCS
 Box Size : 25*25*16 cm
 Box Total Kg +/-3%: 5:00 Kg

Attention & General information

TURLENS Custom Optical Design & Manufacture (Lens for LED's) All technical data contained in this document are properties of "TURLENS". Turlens may subject to change the content without prior notice.

*Lens Use :Streets, Offices, Homes, Stages, Architectural, DownLight , & Decorative Lighting.

Lens Material Optical Grade PMMA / PC. Best Available Optical Efficiency & Light Transmittance High.

Operating Temperature: -40°C ~ + 80°C (upper limit +80°C) PMMA UV Resistant.

Operating Temperature: -40°C ~ + 90°C (upper limit +90°C) PC with UV & V2.

Average transmittance in visible spectrum: 400nm~700nm> 90% - (3mm thick PMMA)

*Holder information Operating Temperature: -40°C ~ + 90°C PC R O H S , UV & Flammability Standard V2.

Assembly info.

- *If adhesive is used, make sure that the adhesive is acid-free., *If you need to clean the lenses, use only mild soap and water.,
- *Use very soft cloth to dry., *Do not use any solvents on lenses., *Our product is guaranteed against manufacturing defects only.,
- *Do not store the product in a dusty & corrosive environment., *Do not touch the optical portion of the lens with your bare hands.